



*- Kent County Household Hazardous Waste Program -*

**TYPES OF MATERIALS ACCEPTED FOR DISPOSAL:**

- OIL-BASED PAINTS & STAINS
- SOLVENTS, THINNERS, TURPENTINE
- PAINT STRIPPERS & REMOVERS
- ADHESIVES, GLUES, CEMENTS
- CAULKING & SEALANTS
- ROOF COATINGS & SEALANTS
- GASOLINE OR GAS & OIL MIX
- WHITE GAS - COLEMAN FUEL
- CHARCOAL LIGHTER FLUID
- AEROSOLS & FIRE EXTINGUISHERS
- PROPANE CYLINDERS (16 OUNCES OR LESS)
- TRANSMISSION & BRAKE FLUID
- ANTI-FREEZE & FLUSHES
- AIR-CONDITIONING REFRIGERANTS
- FUEL ADDITIVES
- CARBURETOR & FUEL INJECTION CLEANERS
- WEED KILLERS & HERBICIDES
- FERTILIZERS
- RODENT POISONS
- FUNGICIDES & DISINFECTANTS
- INSECT SPRAYS & TRAPS
- WOOD PRESERVATIVES
- TUB, TILE, SHOWER CLEANERS
- TOILET, DRAIN AND SEPTIC TANK CLEANERS
- WOOD OR METAL CLEANERS & POLISHES
- DEGREASERS AND SPOT REMOVERS
- MERCURY THERMOSTATS & THERMOMETERS
- FLUORESCENT LIGHTS
- BATTERIES - ALKALINE, NI-CAD, LITHIUM, ETC.
- PHOTO & POOL CHEMICALS

**THE PROGRAM IS SPECIFICALLY DESIGNED FOR COUNTY RESIDENTS WISHING TO DISPOSE OF THEIR UNUSED OR UNWANTED HOUSEHOLD CHEMICAL WASTE.**

*It's fast, easy and free!*

Just give us a call to set-up an appointment to drop off your household hazards at one of the following permanent centers:

**KENTWOOD CENTER**  
on Tuesdays between 3:00 pm - 6:00 pm

**NORTHWEST GRAND RAPIDS CENTER**  
on Mondays between 1:00 pm - 4:00 pm  
and  
Wednesdays between 9:00 am - 12:00 pm (noon)

**NORTH KENT CENTER (ROCKFORD)**  
on Fridays between 9:00 am - 12:00 pm (noon)

**WYOMING CENTER**  
please call the Clean Water Plant at 616-261-3564 for an appointment

Please call 616-336-2570 or 1-888-217-2850 for an appointment or more information.

**LATEX PAINT, MEDICAL WASTE, PHARMACEUTICALS, AMMUNITION AND FIREWORKS ARE NOT ACCEPTED.**

*You must have an appointment to bring in your Household Hazardous Waste for Disposal!*

The Household Hazardous Waste Program is a tax-free service for Kent County residents.

No materials from business, schools, institutions or commercial farmers can be accepted.



# Nelson Township News

Established 1854

Volume XIII Issue 2

Winter 2006



*New Township Website*

The Nelson Township website [www.nelsontownship.org](http://www.nelsontownship.org) is now up and running. It contains: general information, boards and committees, also forms and applications.

The clerk has information regarding elections, passports and rules and regulations for our cemeteries. The treasurer details taxes, millage rates and dog licenses. The assessor features land division, property inspections, and several informational links. The zoning administrator emphasizes filing complaints, master plan updates, and various zoning issues.

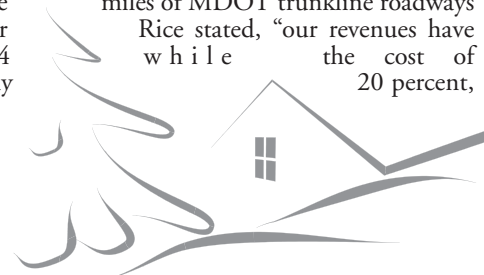
The library link includes a history of the Sand Lake/Nelson Township Library, capital campaign officers and information, a list of building fund donors, and Friends of the Library officers and volunteering specifics.

There are also E-mail connections for the supervisor, clerk, treasurer, assessor, and zoning administrator. The site has been up and running for about two months.

*Kent County Road Commission*  
**2006/2007 WINTER MAINTENANCE PROCEDURES**

The Kent County Road Commission will be entering the 2006 winter season with fewer trucks on the road than in past years. Due to declining revenues since 2004, and a hiring freeze placed into effect in 2005, 17 fewer winter maintenance employees will be available to plow the 2000 miles of Kent County Road Commission roads and the 1000 Lane this winter season. Managing Director Rice stated, "our revenues have declined 6.5 percent since 2004 while the cost of doing business has increased nearly 20 percent, requiring the Board to cut spending. This has resulted in major projects being delayed and vacant positions not being filled."

Winter maintenance service to motorists and residents will remain the primary goal of the Road Commission, but it will take longer to complete coverage of the second largest County Road System in the State. It will also require that lower volume roads, such as lake plats and residential subdivisions, not be routinely plowed on weekends unless five inches or more of snow has accumulated. Rice stated, "We will need to balance the amount of time we can expect our employees to operate during storms with the projected forecast for additional snow accumulation. We ask motorists and residents to please be patient, we will get there, and to call only if you feel you have an emergency situation that needs to be addressed." The KCRC will again operate a day-time and night-time shift during the weekdays for expanded coverage of peak driving times.



**NELSON TOWNSHIP**

2 E. Maple Street, Sand Lake 49343  
Office Hours: Monday - Thursday  
9:00 a.m. - 3:00 p.m.  
Telephone (616)636-5332 FAX (616)636-4452

**TOWNSHIP BOARD MEMBERS**

Supervisor: Dorothy Bishop  
Clerk: Laura Hoffman  
Treasurer: Kathy Reed  
Trustees: Glen Armstrong, Tom Noreen  
Assessor: Jason Rosenzweig  
Zoning/Enforcement: Jerry Gross

**TOWNSHIP BOARD MEETING**

2nd Tuesday of each month at 7:00 p.m.

**VILLAGE OF SAND LAKE**

2 E. Maple Street, Sand Lake 49343  
Office Hours: Monday-Thursday 9:30 a.m. - 2:30 p.m.  
Telephone (616)636-8854 FAX (616)636-4564

**VILLAGE COUNCIL MEMBERS**

President: Dave Dewey  
Clerk: Beth Miller  
Treasurer: Brenda Arnold  
Trustees: Dave Tibbe, Billie Jo Thielke,  
Tonia Parkhurst, Carol Simpson,  
Joyce Haywood, Roger Towsley

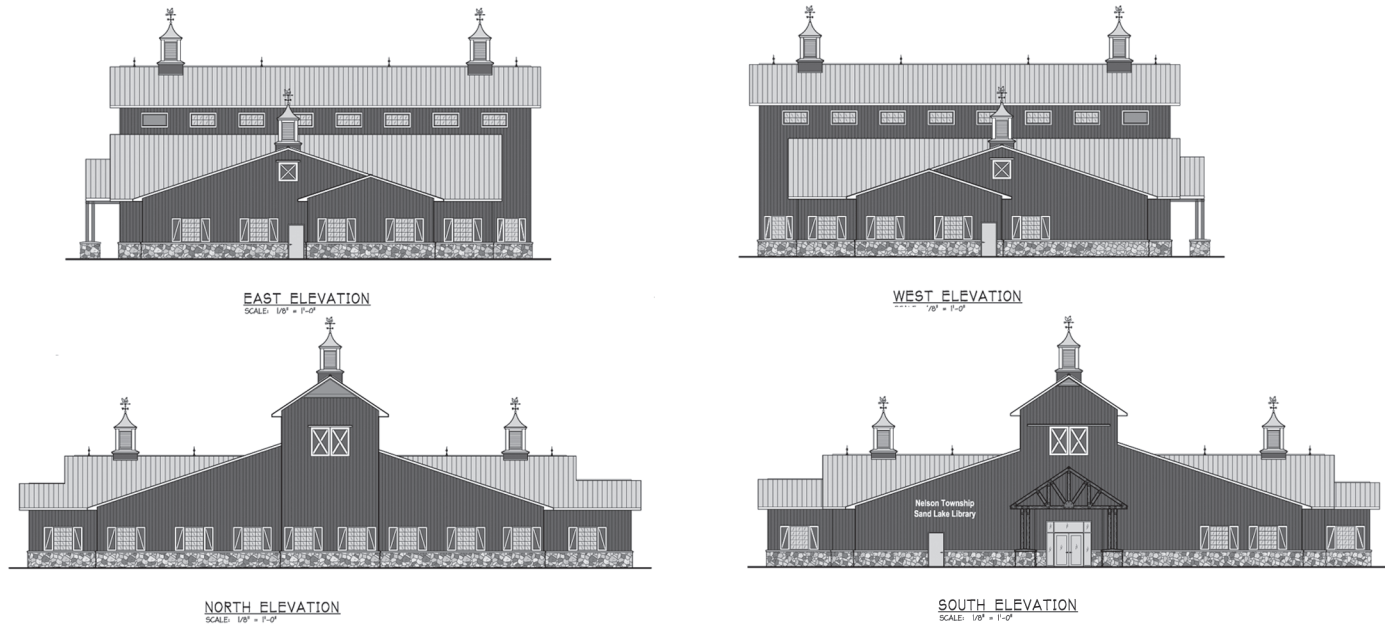
**VILLAGE COUNCIL MEETING**

3rd Monday of each month at 7:00 p.m.

*Holiday Hours*  
**- CLOSED -**

**Friday, December 22nd through Monday, January 1st.**  
**The Nelson Township Treasurer will be in to collect taxes**  
**Wednesday, December 27th from 9:00 am - 3:00 pm**  
**and Thursday, December 28th from 9:00 am - 5:00 pm**  
**Regular Hours resume January 2nd.**

*E-mail Us! [supervisor@nelsontownship.org](mailto:supervisor@nelsontownship.org) - [clerk@nelsontownship.org](mailto:clerk@nelsontownship.org) - [treasurer@nelsontownship.org](mailto:treasurer@nelsontownship.org) - [assessor@nelsontownship.org](mailto:assessor@nelsontownship.org)*



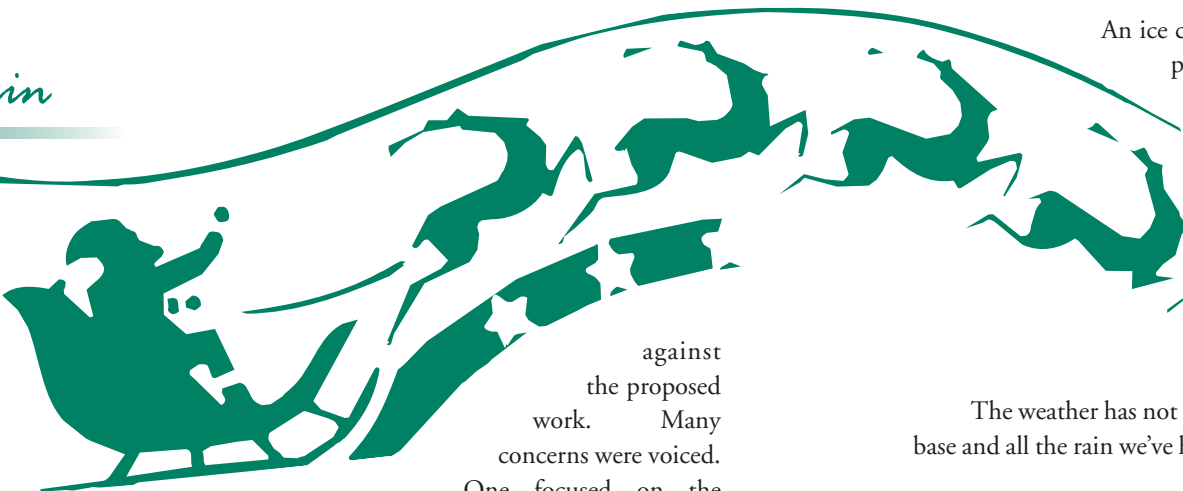
## The Black Creek Intercounty Drain

Participating in or observing a Drain Board in action is one of the more interesting and passionate governmental proceedings that is open to the public at the local level. On Thursday, October 19th, the Black Creek Intercounty Drain Board convened at the Spencer Township Hall at the petition of the Spencer Township Board.

Michael Gregg, from the Michigan Department of Agriculture, chaired the board. Kent County Acting Drain Commissioner, Doug Spote, and Montcalm County Drain Commissioner, Don Cooper, were the other board members. The Drain Board met to evaluate the practicability of including the Lincoln Lake Drain into the Black Creek Drain and to evaluate whether or not improvements could be done that would alleviate the silting of Lincoln Lake at the mouth of the Lincoln Lake Drain.

A little history. The Lincoln Lake Drain, or Dug Creek as **Don Mabie** called it, was constructed by local labor (**Eldon Lutz** said his grandfather was one of the men who dug the drain) in 1927 to divert Black Creek into Lincoln Lake to alleviate seasonal flooding across and south of 18 Mile Road, west of its junction with Medler. Presently, most of Black Creek's flow is still diverted into the Lincoln Lake Drain.

About 100 residents of Kent and Montcalm Counties, along with officials from Nelson, Pierson, and Spencer Townships, attended the meeting. About 40 residents gave much testimony, with all but one



against the proposed work. Many concerns were voiced. One focused on the possible cost that would be borne by all those in the Black Creek watershed, while only a few along the Lincoln Lake Drain would benefit. Numerous citizens noted the poor quality of work done on other drains by both counties and its adverse impact on the plants, wildlife, and water quality. The impact of returning all or part of Black Creek's flow to its original channel worried many residents who lived south of the present diversion. An older gentleman provided a bit of comic relief when he said "maybe Ice Mountain could help solve the problem."

In spite of all the negative comments, the Drain Board voted to add the Lincoln Lake Drain into the Black Creek Intercounty Drain and proceed with engineering studies to determine the cost and extent of the improvements required to solve the problem. Once this has been completed, another public hearing will be held to determine the necessity of the project.

**BY TOM NOREEN**, BUGLE EDITOR/PUBLISHER & NELSON TOWNSHIP TRUSTEE

## Popular Reading Programs Return to KDL

Adult reading enthusiasts can once again sign up for KDL's "Let It Snow" Reading Club for adults at any Kent District Library branch. The popular bingo program allows avid readers to win prizes and will run from December 1, 2006 through March 31, 2007.

KDL readers are also invited to check out the book everyone in Kent County will be reading and discussing, as the "One Book, One County" program kicks off. The featured title will be revealed

on December 10, so look for it soon! Kent District Library participation in this program is generously sponsored by the KDL Alliance of Friends.



## Library Ground-breaking Celebration

Ground-breaking for our new library building was held on Saturday, September 8 – a warm and sunny day. Speakers included: Congressman, Vern Ehlers, USDA State Director, Gene DeRosset, and KDL Board Chairman, Joel Hondorp. Many dignitaries and 500 school children and educators from Sand Lake Elementary were in the audience.

An ice cream social reception, donated by library patron, Sue Odren, followed the ground-breaking festivities.

Construction of the new facility has begun; as of this news deadline, the excavating has been completed; foundations, floor, and curbing is poured; the plumbing is roughed in; and framing and trusses are in place.

The weather has not been cooperative, but considering the clay base and all the rain we've had, we are pleased with the progress. The

building is expected to be completed in May of 2007.

### Library Capital Campaign

The capital campaign is still underway. Approximately \$170,000 dollars (from 229 donors) has been contributed. The goal for the campaign is set for \$300,000 dollars and the Friends of the Library are continuing to solicit contributions up to and through completion of the new facility. Donations are welcomed. The Friends is a (501)(c)(3) organization and contributions are tax deductible.

Visit [www.kdl.org](http://www.kdl.org) and click on the "Calendar of Events" link for a listing of programs and events at Sand Lake/Nelson Township KDL Branch!

**KDL**  
Kent District Library

Join your friends and neighbors to help build our library  
Construction began September 8, 2006

Enclosed is my gift of:  \$25  \$100  \$250  \$500  Other \$ \_\_\_\_\_

My check payable to **Sand Lake/Nelson Township Bldg. Fund** is enclosed

Name (as you wish it to appear on the permanent display) \_\_\_\_\_

Address \_\_\_\_\_ City \_\_\_\_\_ State \_\_\_\_\_ Zip \_\_\_\_\_

Send to: SL/NT Building Fund, 2 E. Maple Street, P.O. Box 109, Sand Lake, MI 49343. Contributions are tax deductible.